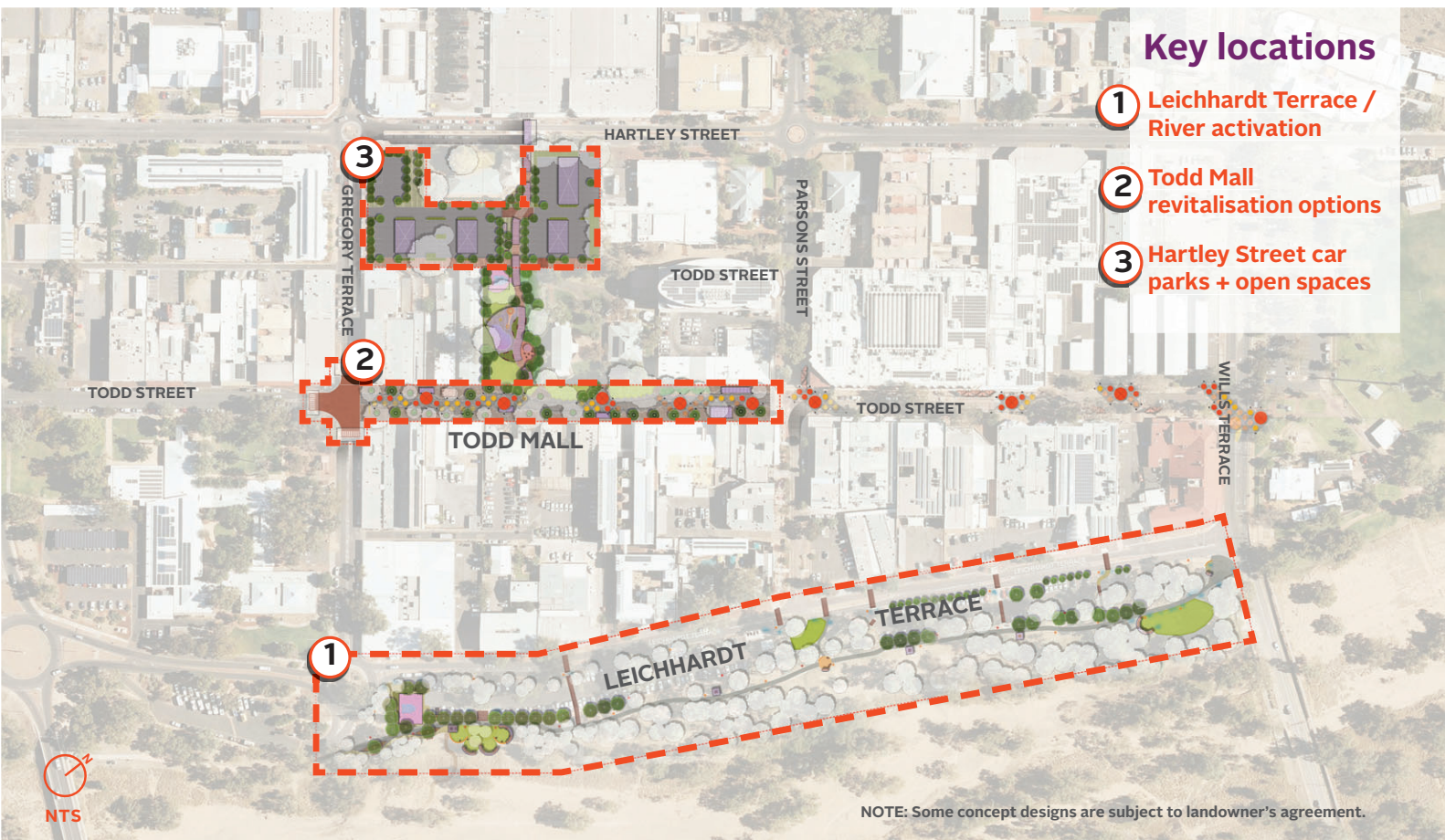




# Regenerating the Alice Town Centre

Community Consultation, February - March 2024

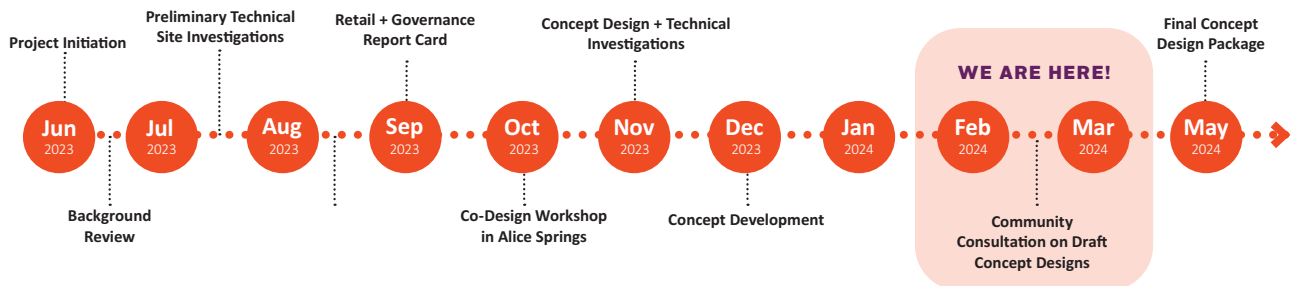
Alice Springs Town Council (ASTC) are delivering the 'Regenerating the Alice Town Centre' project, which aims to engage with the Alice Springs Community to develop Concept Designs for the Alice Springs Town Centre.



## Key locations

- 1 Leichhardt Terrace / River activation
- 2 Todd Mall revitalisation options
- 3 Hartley Street car parks + open spaces

## Project Timeline





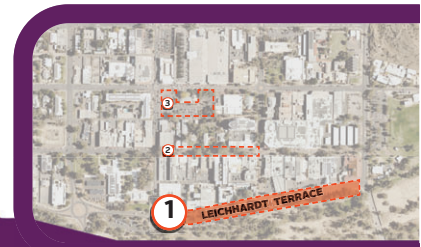
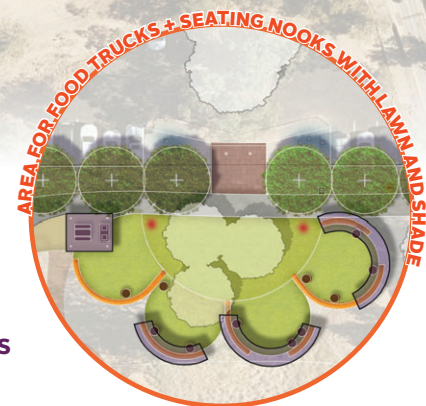
# Regenerating the Alice Town Centre

Concept Design for **LEICHHARDT TERRACE** (Gregory Tce to Wills Tce)



## Features of **Leichhardt Terrace?**

- New Entry Plaza with Trees, Seating Deck, Bike Racks + Information
- Basketball space Shelter + BBQ
- Raising seating deck with shade
- Area for small events + food trucks
- Seating with lawn and shade
- Improved car park and path lighting
- Decorative lighting at pedestrian entry points
- Regenerate riverbank plantings
- Bike repair station

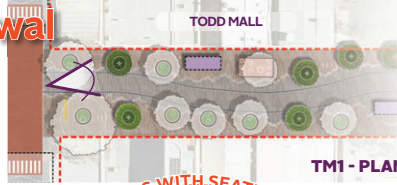




# Regenerating the Alice Town Centre

## Concept Design OPTIONS for TODD MALL

### OPTION TM1 - Todd Mall Streetscape Renewal



TM1 - PLAN

### Features of TM1

- Renewal of pavers + landscape
- Large trees retained
- Additional garden beds + seating
- Pedestrian only space - maintains walkable streetscape
- Better cycle access



### OPTION TM2 - Todd Mall Art walk



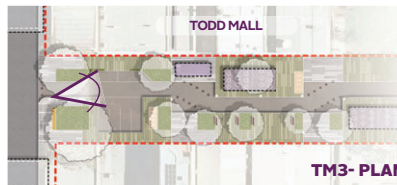
TM2 - PLAN

### Features of TM2

- Artistic shade structure + art walk
- Experience unique to Alice Springs
- Can be combined with other streetscape options



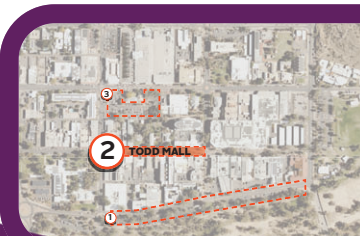
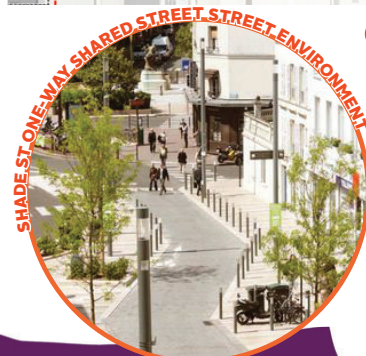
### OPTION TM3 - Todd Mall Shared Street



TM3 - PLAN

### Features of TM3

- Shared street for walking, cycling, cars - slow speed with parking / loading
- Large trees retained
- New garden beds + seating
- Casual surveillance from drivers day + night - safety

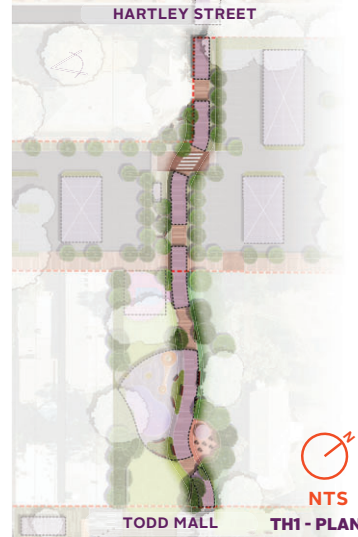




# Regenerating the Alice Town Centre

Concept Design for **HARTLEY STREET** - Arbour + Community space

## TH1 Arbour path



## Features of TH1

- Shaded, green walkway connecting Todd Mall with Hartley Street
- More legible for visitors
- Safer, better lit, busier route
- 130m length
- Part located on Uniting Church land

## TH2/ TH3 Community space

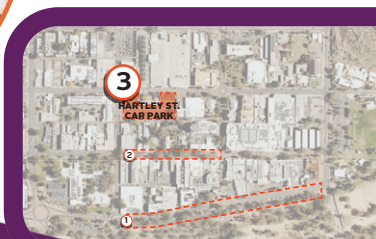


## Features of Community space

- New meeting spaces + play spaces with water
- Shaded for year-round use
- Attractor for locals to visit Mall more often
- Big screen
- Location options near Uniting Church OR Hartley Street car park



NOTE: Some concept designs are subject to the landowner's agreement.

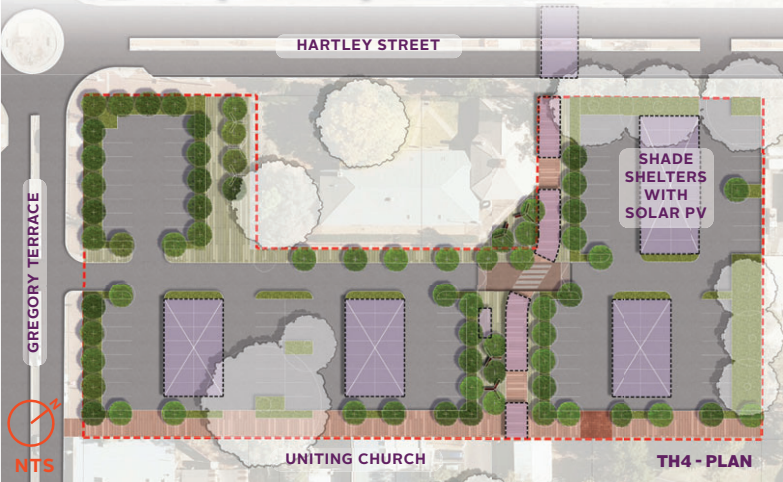




# Regenerating the Alice Town Centre

## Concept Design for **HARTLEY STREET** - Car park

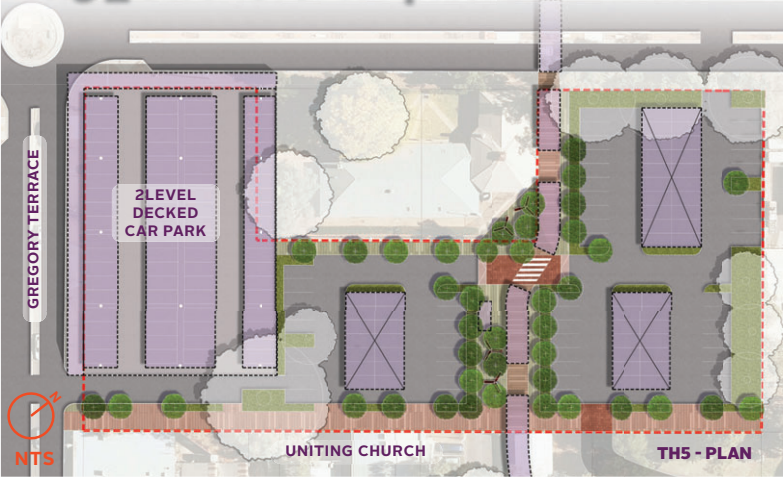
### TH4 \_ Car park improvements



### Features of **TH4**

- Easy to access car park layout
- Shade shelters over parking with solar PV
- Abundant shade and greening
- Improved footpaths through car parks

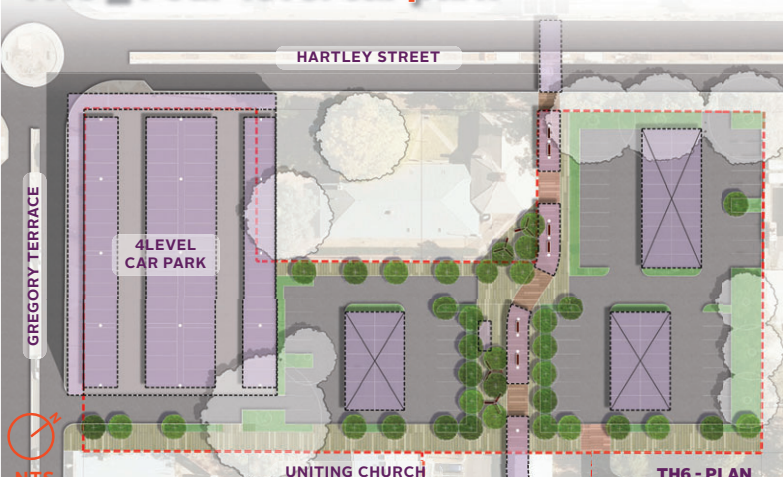
### TH5 \_ Two-level car park



### Features of **TH5**

- Two-level car park at Hartley / Gregory
- Easy to access car park layout
- Shade shelters over parking with solar PV
- Green wall to parking structure

### TH6 \_ Four-level car park



### Features of **TH6**

- Four-level car park at Hartley / Gregory
- Ground level retail under car park facing street

